

Introduction

Native Americans have lived in this region for over seven thousand years. The indigenous peoples to this area are the Mohican Nation who numbered about 20,000 people, and flourished in the Hudson River valley and Housatonic River valley. They used the upland woodlands including Monterey for their hunting grounds. The Native American displays at the Bidwell House Museum generally illustrate the pre-contact period prior to the 1600s. In the carriage barn, you will find a brief history of the Mohicans – the Muh-he-con-neok – “the People of the Waters That Are Never Still” – who became known as the Stockbridge-Munsee after living in Stockbridge in the 1700s. The self-guided walk takes you back in time with displays about medicinal herbs, farming practices and a wigwam hunting village. Although the Stockbridge Indians were forced to relocate westward in the 1780s, this area remains their sacred homeland and the tribe maintains a strong connection here.



School Children explore the wigwam on the Museum grounds.



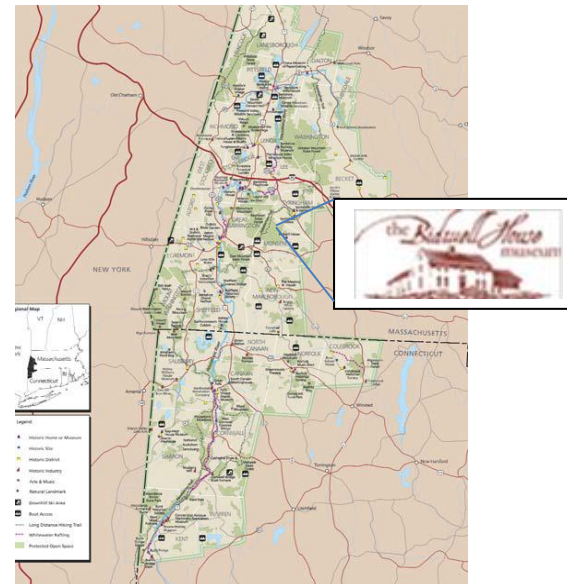
The heritage garden in the summer

The house is open for tours Thursday through Monday from May to October. Grounds are open to the public for free year round. For hours and list of programs and events, please visit www.bidwellhousemuseum.org
100 Art School Road, Monterey MA 01245
(413) 528-6888 or bidwellhouse@gmail.com

The Bidwell House Museum is a private 501(c)(3) non-profit educational institution. The house is listed on the National Register of Historic Places. The house, grounds, gardens, woodlands and 192 acre property provide visitors with an immersive encounter with Early American History, including Native Americans.

The Native American Woodland and Hunting Grounds Interpretive Trail at the Bidwell House Museum was developed in collaboration with the Upper Housatonic Valley Heritage Area and with the input and consent of the Stockbridge-Munsee Band of the Mohican Nation. This is part of a regional Native American Interpretive Trail focusing on the Mohican Nation in Western Massachusetts and Northwest Connecticut. This trail tells one part of the Mohican story. You can find other parts of the story at the Mission House in Stockbridge, Monument Mountain in Great Barrington, and other locations.

For links to other sites, visit the websites of Housatonic Heritage: housatonicheritage.org; and the Stockbridge-Munsee band: www.mohican.com.



The drawing on the cover is of a Stockbridge Indian who fought in the Colonial Militia during the Revolutionary War, and is from the 1784 journal of Johann von Ewald.

NATIVE AMERICAN INTERPRETIVE TRAIL WOODLANDS AND HUNTING GROUNDS



the Bidwell House museum



- 1 History of the Mohicans; Projectile Point Display
- 2 Native American Medicinal Herbs
- 3 Agricultural Practices
- 4 Wigwam Hunting Village
- 5 Woodland Management
- 6 Indian Trails
- 7 Mosaic of Land Uses
- 8 Maple Sugaring
- 9 Impacts of Colonization
- A Bidwell House—Historic 1760s house and period furnishings; tours available (check web site)
- B Horse Barn—exhibit of 18th–19th century colonial farm implements
- C Piggery—exhibit of 18th–19th century colonial farms implements
- D Foundation of 19th century barn
- E Foundations of two 19th century barns
- F Parade Ground
- G Field
- P Parking
- ♿ P Handicapped Parking
- Gardens
- - - - - Native American Interpretive Trail